

BIRGITTA HULTHÉN

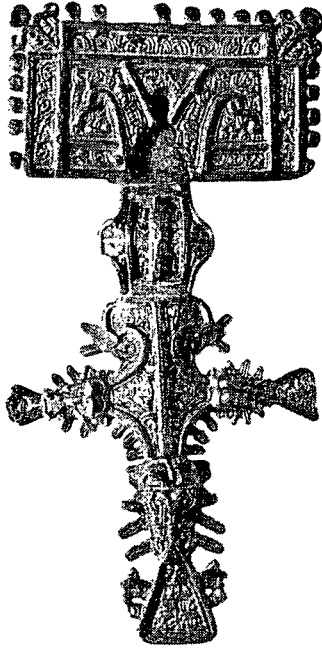
MONOGRAPHS ON CERAMICS 3

**HELGÖ
MOULDS AND ROUTES**

**CERAMOLOGICAL INVESTIGATIONS OF
DISTRIBUTION, CERAMICS CRAFT
AND RAW MATERIALS**

by

Birgitta Hulthén



Laboratory for Ceramics Research
Department of Quaternary Geology
Institut of Geology. Lund University. Sweden

CONTENTS	<i>Page</i>
INTRODUCTION	7
HELGÖ – AN IRON AGE CENTRE IN THE LAKE MÄLAREN	7
DISTRIBUTION OF BROOCHES	11
INVESTIGATIONS	17
MOULDS	17
The Investigation Sample.	17
PROBLEMS	19
METHODS	20
THERMAL ANALYSES	20
MICROSCOPY	20
DIATOM ANALYSES	21
TEST CLAY INVESTIGATION	21
RESULTS	23
RAW MATERIAL	23
Overview	23
<i>Clay groups A through E</i>	24 ff.
The clay prospecting at and near the Helgö site	28
THE CRAFT	29
Preparation of raw materials	29
WARE GROUPS	35
The results of the analyses of the clays and the coarse fractions	36
<i>Ware groups I through IV</i>	36 ff
<i>A unique ware type</i>	37
FIRING OF THE MOULDS	38
REVIEWING THE INITIAL QUESTIONS	39
CERAMICS EQUIPMENTS IN THE ANCIENT METAL INDUSTRY	41
SOLDERING PLATES	41
EMBER VESSELS	42
CRUCIBLES	43
CONCLUSIONS	46
PLATE I through III	48 ff.
ACKNOWLEDGEMENTS	52
FIGURE AND TABLE INDEX	53
REFERENCES	55