

GEOLOGICAL SOCIETY SPECIAL PUBLICATION NO. 346

Australian Landscapes

EDITED BY

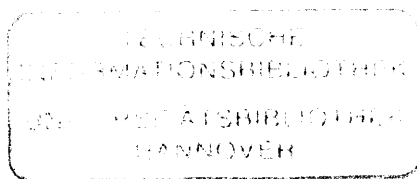
P. BISHOP

University of Glasgow, UK

and

B. PILLANS

Australian National University, Australia



2010

Published by
The Geological Society
London

Contents

Dedication	vii
BISHOP, P. & PILLANS, B. Introduction: Australian geomorphology into the 21st century	1
NOTT, J. A theory (involving tropical cyclones) on the formation of coarse-grained sand beach ridges in NE Australia	7
TRAVERS, A., ELIOT, M. J., ELIOT, I. G. & JENDRZEJCZAK, M. Sheltered sandy beaches of southwestern Australia	23
SCHMIDT, S., DE DECKKER, P., ETCHEBER, H. & CARADEC, S. Are the Murray Canyons offshore southern Australia still active for sediment transport?	43
THOM, B. G., KEENE, J. B., COWELL, P. J. & DALEY, M. East Australian marine abrasion surface	57
HOLDAWAY, S. J. & FANNING, P. C. Geoarchaeology in Australia: understanding human–environment interactions	71
DUNKERLEY, D. Ecogeomorphology in the Australian drylands and the role of biota in mediating the effects of climate change on landscape processes and evolution	87
FUJIOKA, T. & CHAPPELL, J. History of Australian aridity: chronology in the evolution of arid landscapes	121
HESSE, P. P. The Australian desert dunefields: formation and evolution in an old, flat, dry continent	141
COLHOUN, E. A., KIERNAN, K., BARROWS, T. T. & GOEDE, A. Advances in Quaternary studies in Tasmania	165
HABERLAH, D., GLASBY, P., WILLIAMS, M. A. J., HILL, S. M., WILLIAMS, F., RHODES, E. J., GOSTIN, V., O’FLAHERTY, A. & JACOBSEN, G. E. ‘Of droughts and flooding rains’: an alluvial loess record from central South Australia spanning the last glacial cycle	185
HEIMSATH, A. M., CHAPPELL, J. & FIFIELD, K. Eroding Australia: rates and processes from Bega Valley to Arnhem Land	225
QUIGLEY, M. C., CLARK, D. & SANDIFORD, M. Tectonic geomorphology of Australia	243
BISHOP, P. & GOLDRICK, G. Lithology and the evolution of bedrock rivers in post-orogenic settings: constraints from the high-elevation passive continental margin of SE Australia	267
OSBORNE, R. A. L. Rethinking eastern Australian caves	289
CHIVAS, A. R. & ATLHOPHENG, J. R. Oxygen-isotope dating the Yilgarn regolith	309
Index	321