

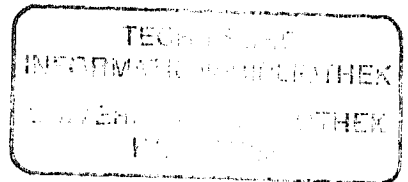
PROCEEDINGS OF THE 9TH INTERNATIONAL CONFERENCE ON
APPLICATIONS OF STATISTICS AND PROBABILITY IN CIVIL ENGINEERING
SAN FRANCISCO, CALIFORNIA, USA, JULY 6-9, 2003

APPLICATIONS OF STATISTICS AND PROBABILITY IN CIVIL ENGINEERING

Edited by

Armen Der Kiureghian, Samer Madanat & Juan M. Pestana
*Department of Civil and Environmental Engineering
University of California, Berkeley, USA*

VOLUME 1



MILLPRESS ROTTERDAM NETHERLANDS 2003

Table of contents

Volume 1

Past Recipients of CERRA Award	XX
Preface	XXI
Conference organization	XXIII
 <i>Keynote papers</i>	
Risk analysis: Examples and discussion <i>Brillinger, D.R.</i>	3
Risk and reliability analysis for flood protection systems in The Netherlands <i>Vrouwenvelder, T.</i>	13
Socially relevant structural safety <i>Corotis, R.B.</i>	15
 <i>Theme A: Reliability methods</i>	
Time-variant reliability using the PHI2 method: Principles and validation by Monte Carlo simulation <i>Andrieu-Renaud, C., Lemaire, M. & Sudret, B.</i>	27
SORM: Some common misunderstandings and errors <i>Breitung, K.</i>	35
Response surface for seismic fragility analysis of RC structures <i>Franchin, P., Lupoi, A., Pinto, P.E. & Schotanus, M.IJ.</i>	41
A system-based approach for time-variant structural reliability analyses <i>Fu, Q. & Menu, C.</i>	49
A comparison of some numerical methods for estimating time-invariant reliability <i>Gray, W. & Melchers, R.E.</i>	57
Approximation of implicit limit state functions with Support Vector Machines and Vector Quantization <i>Hurtado, J.E.</i>	63
Analysis of uncertain structural systems under white noise excitation by a response surface method <i>Impollonia, N. & Ricciardi, G.</i>	69

Time-dependent system reliability of deteriorating reinforced concrete structures <i>Li, C.Q., Lawanwisut, W. & Zheng, J.J.</i>	77
New developments in directional methods for system reliability assessment <i>Nie, J. & Ellingwood, B.R.</i>	85
Small-sample probabilistic assessment - FREET software <i>Novák, D., Vořechovský, M. & Rusina, R.</i>	91
Representation of random variables using orthogonal polynomials <i>Phoon, K-K.</i>	97
Reliability analysis of the metal forming process <i>Radi, B. & El Hami, A.</i>	105
Bounds on system reliability by linear programming and applications to electrical substations <i>Song, J. & Der Kiureghian, A.</i>	111
Statistical correlation in stratified sampling <i>Vořechovský, M. & Novák, D.</i>	119
Adaptive directional simulation for structural reliability estimation <i>Yonezawa, M. & Park, Y-T.</i>	125
Reliability analysis of light-frame wall systems using a portfolio approach <i>Yu, G. & Rosowsky, D.V.</i>	133
 <i>Theme B: Uncertainty analyses</i>	
Uncertainty, parameter sensitivity and Bayesian updating in the problem of viscous heating of fluid dampers <i>Black, C.J. & Makris, N.</i>	141
Self-organised criticality and Jaynes' entropy <i>Brown, C.B.</i>	149
Compatibility between prior and likelihood distributions and weighting in Bayesian approach applied to reliability assessment <i>Guérin, F., Dumon, B. & Usureau, E.</i>	155
Risk assessment of steel buildings and occupants under fire situation <i>Holický, M.</i>	163
Probabilistic assessment on the basis of interval data <i>Huyse, L. & Thacker, B.H.</i>	169
A stochastic response surface method for random field problems <i>Mahadevan, S., Huang, S. & Rebba, R.</i>	177
Seismic fragility assessment based on Bayesian updating <i>Osaki, T. & Takada, T.</i>	185
Accidental explosions: Bayesian uncertainty handling in assessing damage to structures <i>Vaidogas, E.R.</i>	191
 <i>Theme C: Stochastic methods</i>	
Distribution of eigenvalues of linear stochastic systems <i>Adhikari, S. & Langley, R.S.</i>	201
A model for non-stationary and anisotropic polycrystalline microstructures <i>Arvade, S.R. & Grigoriu, M.</i>	209
Numerical convergence of a spectral stochastic finite element method (SSFEM) in lognormal context <i>Baroth, J., Bodé, L., Bressollette, P. & Fogli, M.</i>	217

Sensitivity of seismically excited structural system by modal analysis <i>Cacciola, P., Colajanni, P. & Muscolino, G.</i>	225
The non geometric spectral moments in reliability of structures for non stationary filtered input <i>Caddemi, S., Duca, I. & Muscolino, G.</i>	233
An improved stochastic model for the out-of-straightness imperfection of the columns <i>Cafarella, F.</i>	243
Uncertain non-linear dynamical systems subjected to seismic loads <i>Desceliers, C., Soize, C. & Cambier, S.</i>	251
Slepian simulation of plastic displacement distributions for shear frame excited by filtered Gaussian white noise ground motion <i>Ditlevsen, O. & Lazarov, B.</i>	259
Transient dynamics induced by shocks in stochastic structures <i>Duchereau, J. & Soize, C.</i>	267
Second order statistical response of a bilinear hysteretic oscillator excited by non stationary stochastic processes <i>Flores, E., Ayala, A.G. & Ordaz, M.</i>	275
Stochastic finite element analysis of non-linear structures modelled by plasticity theory <i>Frier, C. & Sørensen, J.D.</i>	283
On the stochastic stability of deformation processes <i>Gitman, M.B., Gitman, I.M. & Askes, H.</i>	291
Convergence studies in non-linear finite element response sensitivity analysis <i>Gu, Q. & Conte, J.P.</i>	297
Developments in finite element reliability and sensitivity analysis of non-linear structures <i>Haukaas, T. & Der Kiureghian, A.</i>	305
Reliability assessment of real structures <i>Huh, J., Haldar, A. & Lee, S.Y.</i>	313
Non-Gaussian model for spatially coherent seismic ground motions <i>Kafali, C. & Grigoriu, M.</i>	321
Importance sampling of first-excursion probability for non-linear systems <i>Koo, H. & Der Kiureghian, A.</i>	329
Simulation of binary random fields: Application to random media <i>Koutsourelakis, P.S. & Deodatis, G.</i>	337
Computational model validation under uncertainty <i>Mahadevan, S. & Rebba, R.</i>	345
Non-linear filters using Monte Carlo integration for conditional random fields <i>Maruyama, O. & Hoshiya, M.</i>	353
“Moving Least Squares”-elements for stochastic crack propagation simulations coupled with stochastic finite elements <i>Most, T. & Bucher, C.</i>	359
Probabilistic risk assessment of homogeneous earth dams <i>Mrabet, Z. & Bouayed, A.</i>	367
Improved numerical calculation of the crossing rate of second order stochastic volterra systems <i>Naess, A. & Karlsen, H.C.</i>	373
Fuzzy probabilistic structural analysis considering fuzzy random functions <i>Sickert, J.-U., Beer, M., Graf, W. & Möller, B.</i>	379

Quadrature method for finite element reliability analysis <i>Sudret, B. & Cherradi, I.</i>	387
Solution for stochastic structural response with the aid of FPK-equation and standard FEM software for diffusion problems <i>Varpasuo, P.</i>	395
Modeling wave loads on ships using peaks over threshold method <i>Wang, L. & Moan, T.</i>	401
Simulation of non-stationary processes based on Hilbert spectra <i>Wen, Y.K. & Gu, P.</i>	409
 <i>Theme D: System identification and model selection</i>	
Modal analysis of a densely instrumented building using strong motion data <i>Arici, Y. & Mosalam, K.M.</i>	419
Accuracy of system identification in the presence of random fields <i>Bucher, C., Huth, O. & Macke, M.</i>	427
Probabilistic model selection for systems with design constraints <i>Field, R.V. Jr., Grigoriu, M. & Wojtkiewicz, S.F.</i>	435
Likelihood updating of random process load and resistance parameters by monitoring <i>Friis-Hansen, P. & Ditlevsen, O.</i>	443
Bayesian updating of non-linear structural system models subjected to seismic disturbances: Relations between simplified and detailed models <i>Izquierdo, F., Esteva, L. & Heredia-Zavoni, E.</i>	451
Experimental verification of μ -synthesis controller for a seismic-excited laboratory model of a three-story building <i>Min, K-W., Lee, Y-C., Park, M-K., Joo, S-J., Kim, J-K. & Ho, K-C.</i>	459
Health monitoring and damage detection in base-excited structures using the Intelligent Parameter Varying (IPV) technique <i>Saadat, S., Noori, M.N., Buckner, G.D. & Furukawa, T.</i>	467
Probabilistic damage estimation of a steel frame model through vibration tests <i>Saito, T., Mase, S. & Morita, K.</i>	473
A time-domain system identification technique with optimum number of finite elements <i>Vo, P.H., Haldar, A. & Ling, X.</i>	481
 <i>Theme E: Damage and deterioration</i>	
Use of a mixed-effects approach for the estimation of the parameters of a non-linear pavement rutting model <i>Archilla, A.R.</i>	489
Stochastic methods for the estimation of potential seismic damage <i>Askan, A. & Yücemem, M.S.</i>	497
Reliability assessment of a reinforced concrete beam subjected to corrosion <i>Capra, B., Sellier, A. & Hamsa, S.</i>	503
Damage detection via response surface approximations <i>Casciati, F., Casciati, S. & Faravelli, L.</i>	511

Detecting beam-column connection failures in ASCE Phase II simulated benchmark studies using a two-step Bayesian structural health monitoring approach <i>Ching, J.-Y. & Beck, J.L.</i>	517
Reliability of service life predictions for concrete under sulfate attack <i>Corr, D., Graham-Brady, L., Igusa, T. & Der Kiureghian, A.</i>	525
Simulation of random material properties and local maximum stresses and strains in concrete <i>Corr, D. & Graham-Brady, L.</i>	533
Spatial variability of pitting corrosion and its effect on the reliability of prestressing wires <i>Darmawan, M.S. & Stewart, M.G.</i>	541
Modeling the spatial correlation on pipelines under corrosion <i>De León, D. & Macías, O.F.</i>	549
Statistical comparison between ASTM-C 1018 and JSCE-SF 4 toughness methods for fiber reinforced concrete <i>Emerson, R.N. & Mulay, A.S.</i>	555
Three different models for reliability of building porous materials over time <i>Garavaglia, E. & Pavani, R.</i>	561
Direct computation of statistical size effects in quasi-brittle solids <i>Gutiérrez, M.A.</i>	567
Whole life assessment of corrosion affected reinforced concrete structures <i>Lawanwisut, W., Li, C.Q. & Aguiar, S.D.</i>	573
Statistical damage detection using time series analysis on a structural health monitoring benchmark problem <i>Lei, Y., Kiremidjian, A., Nair, K.K., Lynch, J.P., Law, K.H., Kenny, T.W., Carryer, E. & Kottapalli, A.</i>	581
Response surface parameterization for estimation of fatigue damage and extreme response of marine structures <i>Leira, B.J., Holmås, T. & Herfjord, K.</i>	589
A new model for marine immersion corrosion in structural reliability assessment <i>Melchers, R.E.</i>	599
Computing infrastructure transition probabilities using duration models in the presence of multiple condition states <i>Mishalani, R.G. & Madanat, S.M.</i>	605
Practical method of reliability-based condition assessment of existing structures <i>Mori, Y. & Kato, T.</i>	613
Computational modeling of statistical size effect in quasibrittle structures <i>Novák, D., Bažant, Z.P. & Vořechovský, M.</i>	621
Development of empirical building performance functions data from past earthquakes <i>Sarabandi, P., Pachakis, D., King, S. & Kiremidjian, A.</i>	629
Damage model for reinforced concrete elements <i>Sasani, M. & Bazan, M.</i>	637
Probabilistic modelling of deterioration mechanisms for concrete structures <i>Stewart, M.G. & Faber, M.H.</i>	645
Reliability testing of mechanical products - Application of statistical accelerated life testing models <i>Tebbi, O., Guérin, F. & Dumon, B.</i>	653
Durability of suspension bridge steel cables <i>Yotte, S., Breysse, D., Crémona, C. & Brevet, P.</i>	661

<i>Theme F: Loss estimation</i>	
Uncertainty specification and propagation for loss estimation using FOSM methods <i>Baker, J.W. & Cornell, C.A.</i>	669
Life cycle cost including seismic insurance cost <i>Hoshiya, M.</i>	677
Life Quality Method versus Cost-Benefit Analysis for short-span slab bridges <i>Imhof, D. & Middleton, C.R.</i>	681
Probabilistic framework to earthquake loss estimation <i>Keshishian, P.</i>	689
Life cycle cost oriented tradeoff analysis of seismic steel frame designs via genetic algorithms <i>Liu, M., Burns, S.A. & Wen, Y.K.</i>	697
Estimation of operating losses from earthquake damage to major sea ports <i>Pachakis, D. & Kiremidjian, A.</i>	703
A reinterpretation of Life-Quality Index for Cost-Benefit Analysis of safety programs <i>Pandey, M.D. & Nathwani, J.S.</i>	711
Optimum reliability for building portfolio considering spatial correlation of loads <i>Nishijima, K. & Kanda, J.</i>	719
Discounting for optimal and acceptable technical facilities <i>Rackwitz, R.</i>	725
Benefit-Cost Analysis for mitigating seismic losses: Probabilistic evaluation of retrofit measures for residential buildings in Turkey <i>Smyth, A.W., Deodatis, G., Franco, G., Kunreuther, H. & Luş, H.</i>	735
Estimation of earthquake damage considering time use of day <i>Takahashi, T. & Kubota, D.</i>	743
Application of an importance sampling method to risk models in insurance theory <i>Tanaka, H., Ichida, Y. & Toyoda-Makino, M.</i>	749
Life-cycle cost analysis as a tool for decision making <i>Val, D.V. & Stewart, M.G.</i>	757
Building-specific seismic fatality estimation methodology <i>Yeo, G.L. & Cornell, C.A.</i>	765
 <i>Theme G: Risk assessment and management</i>	
Protecting existing structures against unforeseen events <i>Agarwal, J.</i>	775
Risk and uncertainty <i>Corotis, R.B.</i>	781
Systemic foundations of risk management <i>Elms, D.</i>	787
Statistical damage modeling and analysis of industrial accidents and its application to industrial safety problems <i>Hanayasu, S. & Sekine, K.</i>	793
Consent probability in civil engineering <i>Lind, N. & Thedéen, T.</i>	801
Uncertainty in risk assessment <i>Lind, N.</i>	807

Earthquake structural retrofitting of electric power networks under economic constraints <i>Nuti, C. & Vanzi, I.</i>	813
Mitigation of seismic risk for networks of hospitals <i>Nuti, C., Santini, S. & Vanzi, I.</i>	821
Ten years experience in Linear Facilities Risk Assessment (LFRA) <i>Oboni, F.</i>	829
Probabilistic decision support for regional seismic risk assessment and mitigation <i>Park, J., Dueñas-Osorio, L., Goodno B., Craig, J. & Bostrom, A.</i>	837
Structural reliability assessments for risk management during repair of Tempe bridge <i>Reid, S.G.</i>	843

Theme H: Hazard analysis

A hurricane damage prediction model for residential structures <i>Cope, A.D., Gurtley, K., Filliben, J.J., Simiu, E., Pinelli, J-P., Subramanian, C., Zhang, L. & Hamid, S.</i>	851
Assessment of low flows by POT analysis in Pangani river basin, Tanzania <i>Kazumba, S. & Honjo, Y.</i>	859
Probabilistic prediction of peak flood discharges <i>Lefebvre, M., Ribeiro, J., Rousselle, J., Seidou, O. & Lauzon, N.</i>	867
Statistical simulations of earthquake occurrence behaviors from active fault systems across the Japanese archipelago <i>Sugai, M., Hatori, T., Nishikawa, S. & Matsuo, M.</i>	873
Pilot case flood risk <i>van Manen, S.E. & Brinkhuis, M.</i>	881
Synthesis of a multivariate extreme sea climate <i>Webbers, P.B., Voortman, H.G., van Gelder, P.H.A.J.M. & Vrijling, J.K.</i>	889

Volume 2

Theme I: Probabilistic design

Design spectra determination for performance based seismic design <i>Avelar, C., Ayala, A.G. & Díaz de León, A.</i>	899
The JCSS Probabilistic Model Code: Experience and recent developments <i>Chryssanthopoulos, M., Diamantidis, D. & Vrouwenvelder, T.</i>	907
Reliability based comparison of seismic code criteria for plan irregular buildings <i>Rasulo, A., Pintucchi, B.L., Imbimbo, M. & De Stefano, M.</i>	913
An equivalent linearization approach to pushover analysis <i>Díaz-López, O., Fernández-Palafox, M.A. & Esteva, L.</i>	919
Reliability based code calibration - The JCSS approach <i>Faber, M.H. & Sørensen, J.D.</i>	927
Neural networks application in seismic reliability and performance-based design <i>Foschi, R.O. & Zhang, J.</i>	937