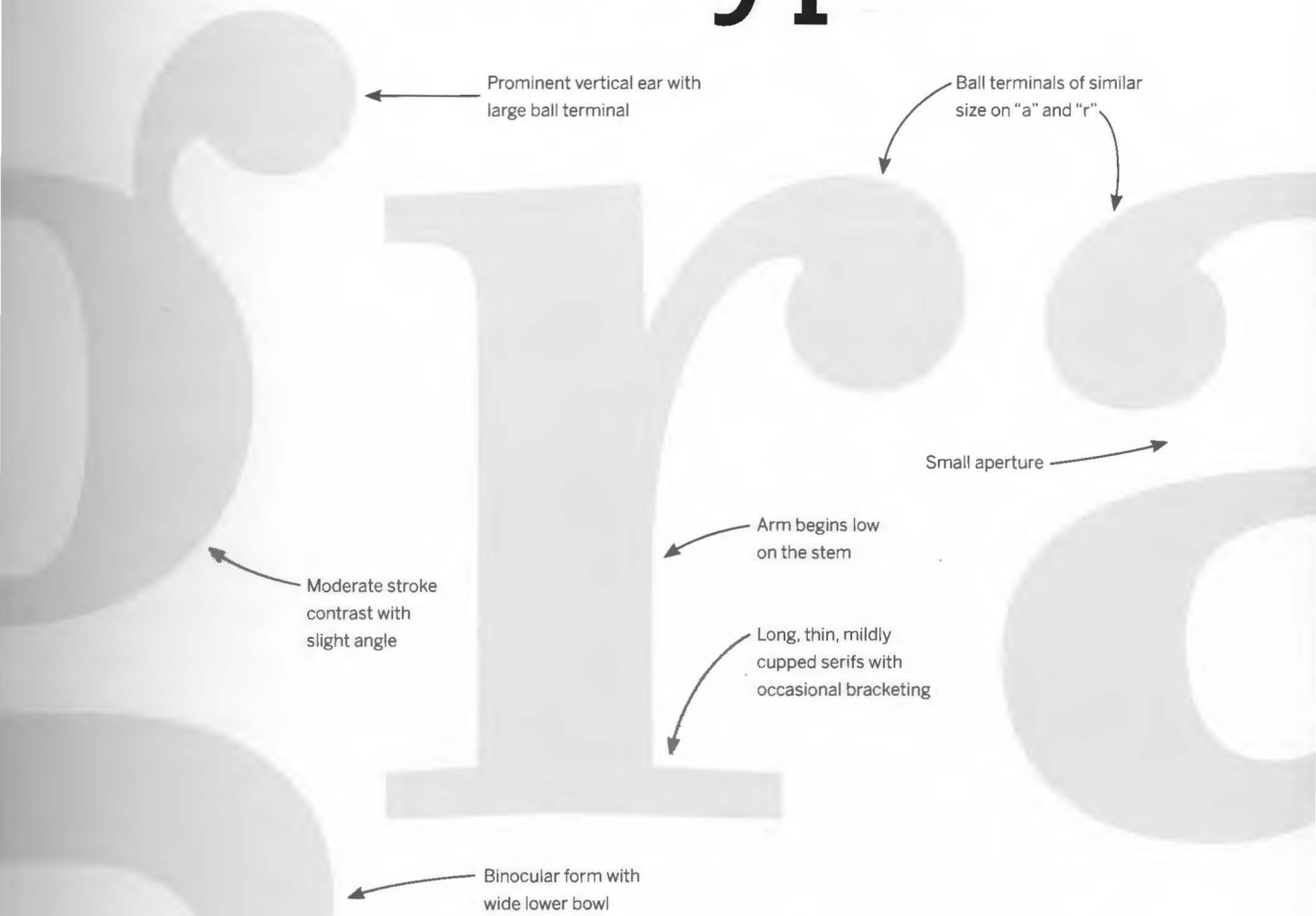


The Anatomy of Type



Prominent vertical ear with large ball terminal

Ball terminals of similar size on "a" and "r"

Small aperture

Moderate stroke contrast with slight angle

Arm begins low on the stem

Long, thin, mildly cupped serifs with occasional bracketing

Binocular form with wide lower bowl

A Graphic Guide to 100 Typefaces

Stephen Coles Foreword by Erik Spiekermann

Contents

| | |
|--|------------|
| Foreword..... | 006 |
| Introduction..... | 007 |
| How to Use This Book | 008 |
| Glossary of Typographic Terminology..... | 009 |
| The Anatomy of Type | 010 |
| Type Classification at a Glance | 012 |
| Key Classification Features | 014 |
| Humanist Serif..... | 022 |
| Transitional Serif..... | 042 |
| Rational Serif..... | 058 |
| Contemporary Serif..... | 080 |
| Inscribed/Engraved..... | 092 |
| Grotesque Sans | 102 |
| Neo-Grotesque Sans..... | 110 |
| Gothic Sans..... | 122 |
| Geometric Sans | 132 |
| Humanist Sans..... | 156 |
| Neo-Humanist Sans | 180 |
| Grotesque Slab..... | 192 |
| Geometric Slab | 202 |
| Humanist Slab | 210 |
| Script | 220 |
| Display..... | 234 |
| Index | 254 |
| Credits and Acknowledgements..... | 256 |