



Oxford Student's ATLAS

Editorial Adviser
Dr Patrick Wiegand

OXFORD UNIVERSITY PRESS

Great Clarendon Street, Oxford OX2 6DP

Oxford University Press is a department of the University of Oxford.
It furthers the University's objective of excellence in research, scholarship,
and education by publishing worldwide in

Oxford New York

Auckland Cape Town Dar es Salaam Hong Kong Karachi
Kuala Lumpur Madrid Melbourne Mexico City Nairobi
New Delhi Shanghai Taipei Toronto

With offices in

Argentina Austria Brazil Chile Czech Republic France Greece
Guatemala Hungary Italy Japan Poland Portugal Singapore
South Korea Switzerland Thailand Turkey Ukraine Vietnam

Oxford is a registered trade mark of Oxford University Press
in the UK and in certain other countries

© Oxford University Press 2007

First published 2007

© Maps copyright Oxford University Press

All rights reserved. No part of this publication may be reproduced,
stored in a retrieval system, or transmitted, in any form or by any means,
without the prior permission in writing of Oxford University Press,
or as expressly permitted by law, or under terms agreed with the appropriate
reprographics rights organization. Enquiries concerning reproduction
outside the scope of the above should be sent to the Rights Department,
Oxford University Press, at the address above.

You must not circulate this book in any other binding or cover
and you must impose this same condition on any acquirer

ISBN 978 0 19 832581 9 (hardback)

ISBN 978 0 19 832580 2 (paperback)

1 3 5 7 9 10 8 6 4 2

Printed in Singapore by KHL Printing Co. Pte Ltd

Paper used in the production of this book is a natural, recyclable product
made from wood grown in sustainable forests. The manufacturing process
conforms to the environmental regulations of the country of origin.

Acknowledgements

The publishers would like to thank the following for permission to reproduce photographs:

NASA images courtesy the MODIS Rapid Response Team at Goddard Space Flight Center p.97; Courtesy of NASA Visible Earth p.87;
Science Photo Library pp.67, 76 (t)/Planetary Visions Ltd) & (b)/M-Sat Ltd), 84 (NASA), 106 (NASA), 113 (NOAA), 114; Corbis p.115;
Oxford Scientific Films pp.114, 115.

The page design is by Adrian Smith.

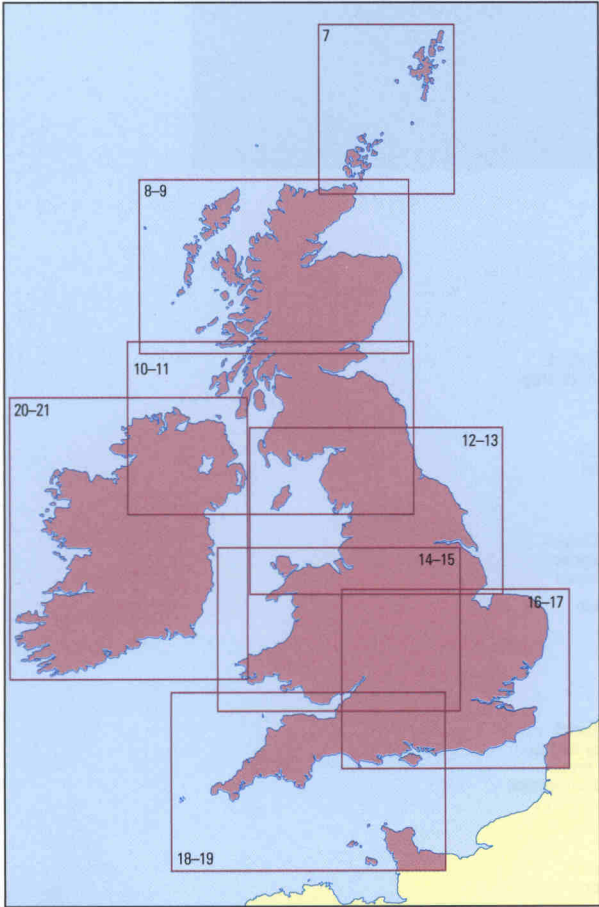
The publishers are grateful to the following colleagues in geography education for their helpful comments and advice during
the development stages of this atlas: Pam Boardman, Graham Butt, Kathryn Clayton, Alan Cottle, Ruth Crossley, Rachel Dean,
Bob Digby, Ian Douglass, Tony Field, Martyn Gill, Joel Griffiths, Matthew Gunn, Gareth Huws, Kathryn Jones, Irfon Morris Jones,
David Langham, Patrick Lewis, Bob Newman, Andrew Parkinson, Liz Roodhouse, John Sadler, Toni Schiavone, Natasha Sirin,
Andrea Wade, Patrick Wherity, Steve Wilkes, and Malcolm Yates.

The publishers would also like to thank the many individuals, companies societies, and institutions
who gave assistance in the gathering of data.

2 Contents

	page
Maps and satellite images	4
Map projections and graphics	5
British Isles Topographic maps	
British Isles	6
Orkney and Shetland Islands	7
Scottish Highlands and Islands	8-9
Northern Ireland Southern Scotland	10-11
Northern England	12-13
Wales West and East Midlands	14-15
South East England	16-17
South West England	18-19
Ireland	20-21

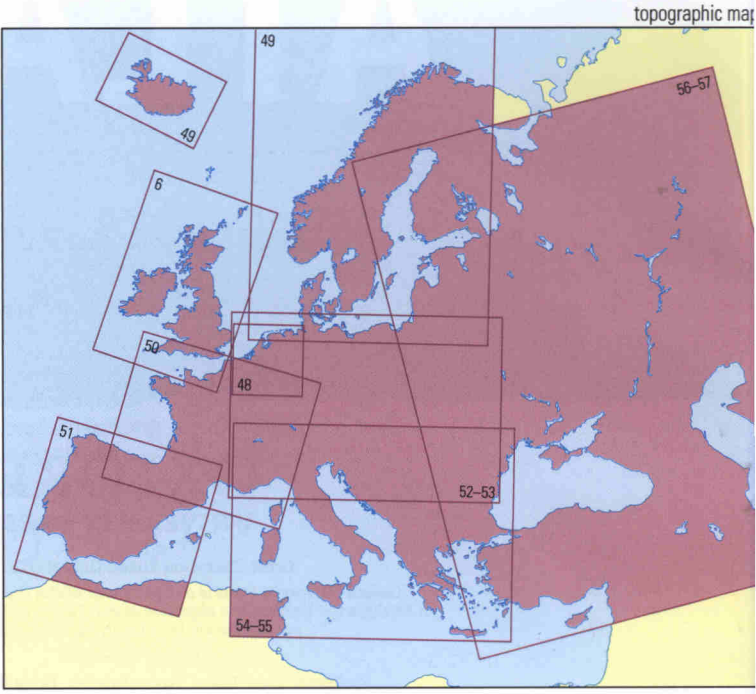
topographic maps of the British Isles



British Isles Thematic maps	
Political	22-23
Physical	24
Geology	25
Climate	26-27
Land use	28
Farming	29
Water Minerals	30
Energy	31
Manufacturing industry	32
Employment	33
Population	34-35
Sport Tourism	36
Quality of life	37
Conservation	38
Pollution	39
Transport	40
Trade	41

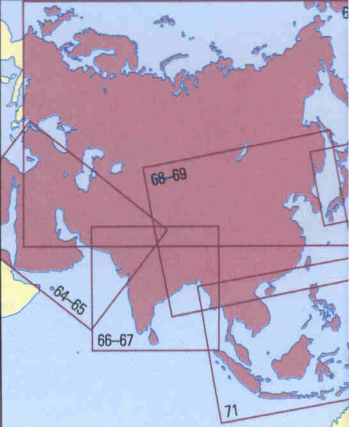
Europe Thematic maps	
Physical	42
Climate Ecosystems	43
Political	44
Population Wealth	45
Economy	46
Tourism	47

Europe Topographic map	
Benelux and the Ruhr	
Scandinavia and Iceland	
France	
Spain and Portugal	
Middle Europe	
Italy and the Balkans	
East Europe and Turkey	



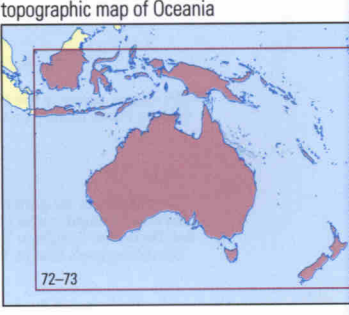
Asia Thematic maps	
Physical	58
Political	59
Climate Ecosystems	60
Economy Population	61

Asia Topographic maps	
Northern Eurasia	62-63
Middle East	64-65
South Asia	66-67
China	68-69
Japan	70
South East Asia	71



topographic maps of Asia

Oceania Topographic map	
Australia and New Zealand	72-73
Oceania Thematic maps	
Climate Ecosystems	
Population Economy	74



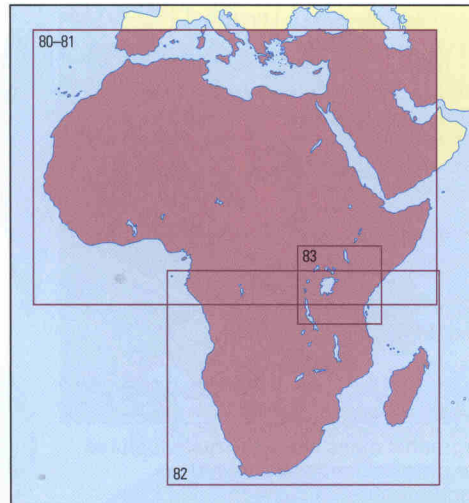
topographic map of Oceania

Africa Thematic maps

Physical Political	75
Satellite images	76
Nature Ecosystems	77
Economy Population	78
Urbanism	79

Africa Topographic maps

Northern Africa	80–81
Central Africa	82
South Africa	83



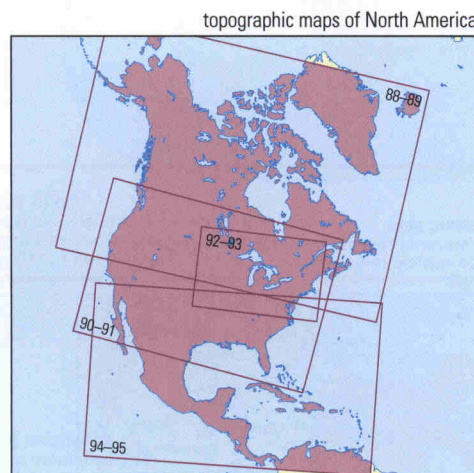
topographic maps of Africa

North America Thematic maps

Physical Political	84
Nature Ecosystems	85
Economy Population	86
Urbanism	87

North America Topographic maps

Canada	88–89
United States of America	90–91
Great Lakes	92–93
Mexico, Central America	
the Caribbean	94–95



topographic map of South America

South America Topographic map

South America	96–97
---------------	-------

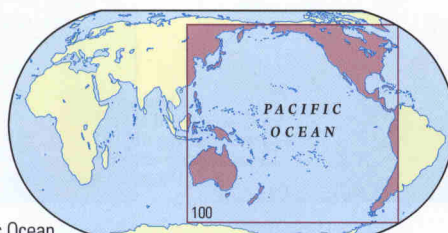
South America Thematic maps

Physical	97
Nature Ecosystems	98
Economy Population	99

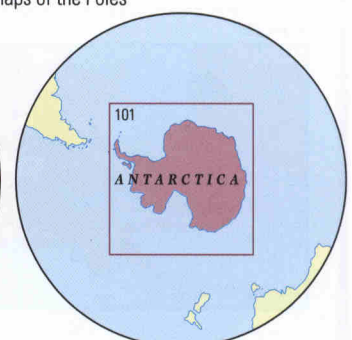
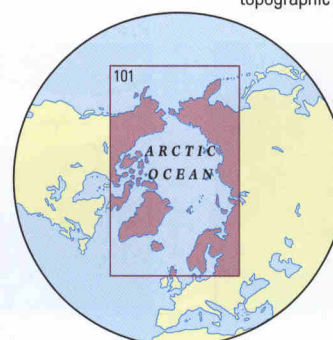


Oceans and Poles Topographic maps

Pacific Ocean	100
Arctic Ocean Antarctica	101



topographic map of the Pacific Ocean



topographic maps of the Poles

World Thematic maps

Political	102–103
Physical	104–105
Earthquakes and volcanoes	106–107
Temperature and ocean currents	108

Pressure, winds and precipitation	109
Climate regions	110–111
Climate data	112
Climate hazards	113

Ecosystems	114–115
Population	116–117
Population trends	118–119
Quality of life	120–121

Economic development	122–123
Energy	124
Trade Transport	125
Environmental issues	126

Climate change	127
Tourism	128–129
Time, distance and cyberspace	130
Globalisation	131

Flags	132–133
Datasets	134–141

Index	142–160
-------	---------