



# Kuali OLE – Activities in Germany

Kirstin Kemner-Heek (GBV) / Roswitha Schweitzer (hbz)

Kuali Days UK, London, October 30th, 2013

# GBV AND HBZ: INTRODUCTION

# Regional Library Service Centers in Germany



- Hosts for **regional union catalogues** (collaborative cataloguing)
- Located in a **heterogenous software environment** for its customers (libraries), data providers and data receivers
- Provide **ILS (SaaS), ILL, portals and other services**

# GBV and hbz

GBV | VZG

## union catalogue ...

- for 72 academic libraries, 400 research libraries
- with more than 37 m bibliographic and 89 m holding records
- 122,000 e-journals  
2,100,000 online resources (ebooks, articles)
- using OCLC CBS since 1993

 hbz

## union catalogue ...

- for ca. 60 academic library systems with more than 1,600 different libraries
- with more than 18 m bibliographic and 40 m holding records
- 120,000 e-journals  
700,000 online resources (full text, e-books etc.)
- using Aleph / ExLibris

# KUALI OLE: EVALUATION

# Motivation

- Current ILS at the end of their life cycle
- Market analysis for our customers
  - Academic libraries
  - Open source and commercial software
- Intention
  - Providing independent information
- Evaluation of Quali OLE
  - Open source software with high potential
  - Developed by and for academic libraries
  - Part of software infrastructure for universities

# Beginnings



# Beginnings

- First contact with Kualifoundation June 2011
  - Interview with Robert McDonald
- ILS-Workshop in Göttingen (GBV) in March 2012
  - Presentation of Kualifoundation OLE by Michael Winkler
- Agreement GBV and hbz in evaluating Kualifoundation OLE
- Kualifoundation Days, Austin, October 2012
- London, February 2013,
  - International Meeting GOKb/KB+, JISC/Kualifoundation,
  - Meeting with Sharon Penfold, Bloomsbury Consortium
- LIBER, Munich, Germany, August 2013
  - Meeting with Kualifoundation OLE/JISC



# Establishing

- Information of German library community:
  - Presentation “Kuali OLE” at the German Library Congress, Leipzig, March 2013
- Project planning
  - Detailed description
  - Roadmap
  - Resource planning
  - Work breakdown structure
- Provision of funds and staff
  - Application for financial resources
  - Job advertisements for developers and system librarians

# Getting started



# Getting started

- First test installations Quali OLE 0.8 in GBV and hbz, August 2013
- Translation of the OLE user documentation
- GOKb/KB+: integration possibilities of the German union catalog for e-journals (ZDB/EZB)
- Search for pilot/test libraries

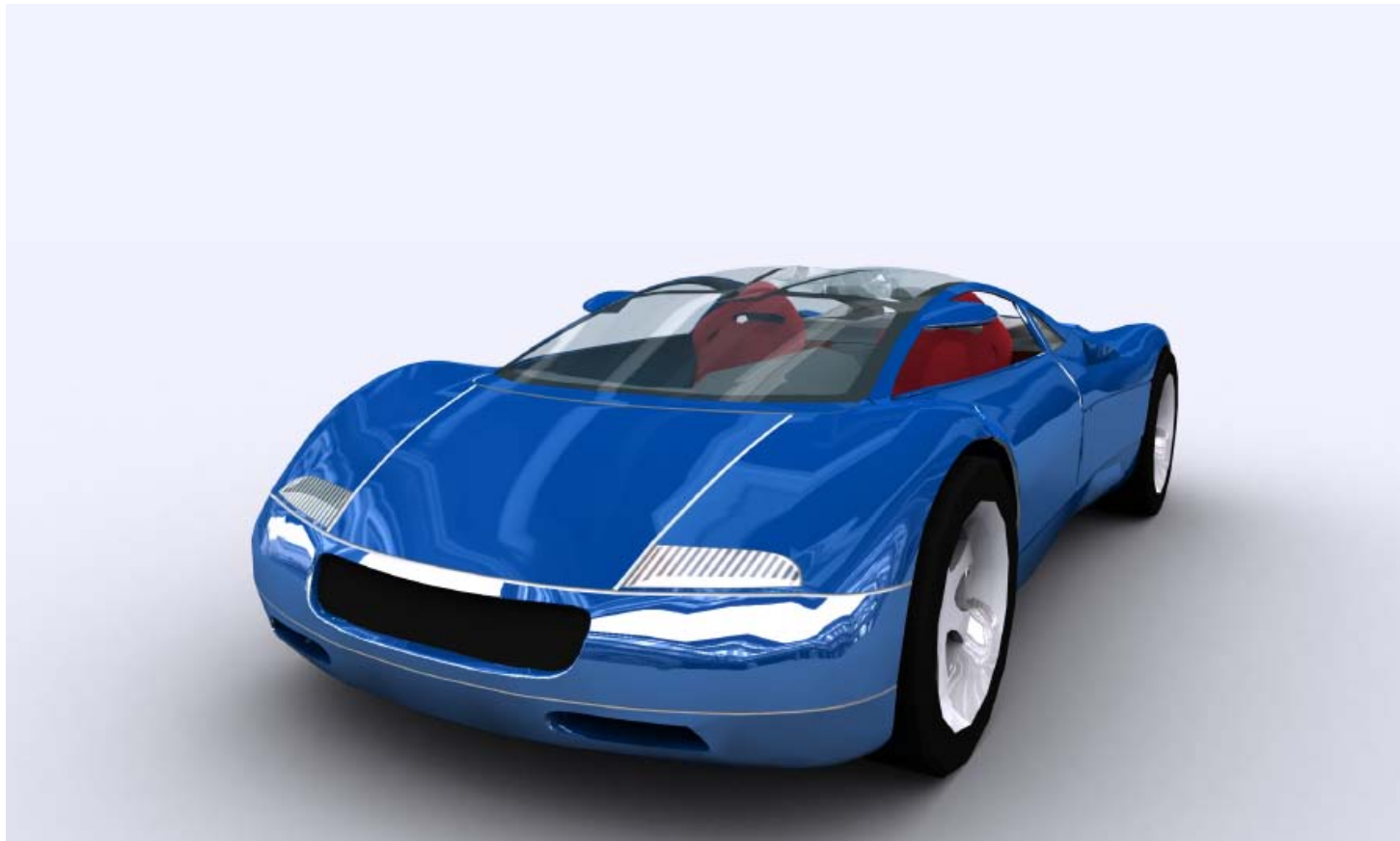
# Test installations OLE 0.8

- Current test installation parameters GBV
  - <http://x4200-92.gbv.de:8080/olefs/portal.do>; <http://x4200-92.gbv.de:8080/oledocstore/>
  - Operating System: Linux x4200-92 3.2.0-4-amd64#1 SMP Debian 3.2.46-1x86\_64 GNU/Linux
  - Server: SUN Fire X4200: 2 x Dual Core AMD Opteron(tm) Processor 285 SE 2,6 Ghz, 32 GB MM
  - Software version: checked out revision 13754
  - Database: MySQL Server 14.14 Distrib 5.5.31 for Linux
- Current test installation parameters hbz
  - <http://kuali.hbz-nrw.de:8080/olefs/portal.do>; <http://kuali.hbz-nrw.de:8080/oledocstore>
  - Operating System: Linux kuali 3.0.93-0.8-xen#1 SMP (70ed288) x86\_64 GNU/Linux, Suse Linux Enterprise Server 11 SP 3
  - Server: Virtual machine Citrix Xen Server Hypervisor, 8 (16) CPU core, 48 GB MM, Hard Disk 1TB
  - Software version: checked out revision 15242
  - Database: MySQL Server 14.14 Distrib 5.5.33 for Linux

# Next steps

- Installation OLE V. 1.0, November 2013
- Import of metadata (bibliographic and holdings records)
  - Print and e-resources
  - Two different libraries
- Input of acquisition and circulation data
- Development of evaluation criteria and test scenarios
  - Based on use cases and requirements of our customers
  - Support from GBV Working Group “Local workflows”
- Functional and technical tests, winter 2013/2014
- Documentation of first test results, spring 2014
- Intention for the long run: operational installation for early adopter libraries

# Our vision



# Thank you.

kemner@gbv.de  
schweitzer@hbz-nrw.de



License: Creative Commons Attribution-NoDerivs 3.0 Unported - Creative Commons  
Namensnennung - Keine Bearbeitung 3.0 Deutschland Lizenz (CC BY-ND 3.0)  
<http://creativecommons.org/licenses/by-nd/3.0/de/>.

Exclusion: Copyrights and licences for Pictures and photos, which are not created by the  
authors, will endure. Particularly the use of iStock pictures (slide 10 and 14) require an iStock  
license.